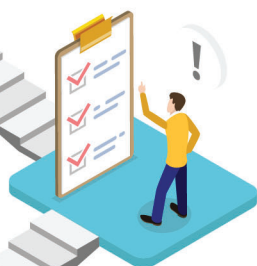




# Cornerstone Partners



**Customized Security Solutions for the Commercial Real Estate Industry:** we provide proactive security services and cutting-edge smart technology to deliver tailored, integrated security solutions that allow clients to focus on their core business.



**Helping you to keep your tenants and visitors top of mind** while reducing vacancies, enhancing satisfaction, mitigating risk, preventing workplace violence, and improving property security.



**Providing building security services across the board** in key areas such as **Fire and Life Safety**, First-Aid/CPR/AED, emergency preparedness and active shooter, and access control and management.



**Factoid:** Providing a welcoming presence for your tenants and visitors who will be greeted with a smile when entering the building helps build a good first impression of your building and business.

[www.aus.com](http://www.aus.com)





# Cornerstone Partners



Did you know? In a recent study\* conducted by Kimberly-Clark, **83% of respondents said restroom conditions reflected how much a company cares about employees and guests.**



In the same study, **82% said seeing cleaners in action and cleaning signage were top indicators of a hygienic environment.**



Kimberly-Clark Professional can help you provide **confidently cleaner workplaces with innovative, efficient cleaning solutions** and [industry insights](#).

<https://www.kcprofessional.com/en-us>

\* Survey results are from the Kimberly-Clark Professional, Hygiene Behaviors Consumer Study, May 2020.



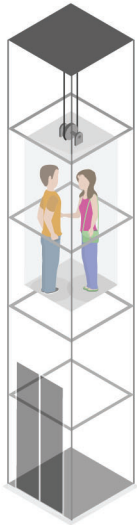


# Cornerstone Partners



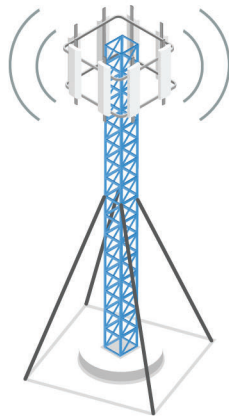
**Cut Costs:** Ditch costly and poorly serviced analog lines and future proof your emergency phones with cellular technology.

[click here](#)



**Ensure Code Compliance:** Are you familiar with the newly adopted elevator communications code that is purpose-built for better serving the deaf, hard of hearing, and speech impaired?

[click here](#)



**Priority Access on an Exclusive Emergency Network:** Kings III's cellular solution is now FirstNet® Capable, providing priority access on the network built for public safety; enhancing reliability and security when disaster strikes.

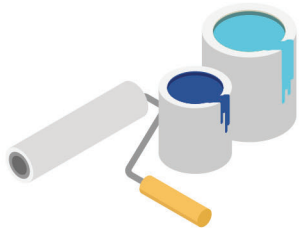
[click here](#)

[www.kingsiii.com](http://www.kingsiii.com)





# Cornerstone Partners



At PPG, we work every day to develop and deliver the paints, coatings and materials that **our customers have trusted for more than 135 years.**



PPG's line-up of strong, well-respected residential products offer a **wide range of choices to meet the varying needs of our customers and deliver great results.**



With headquarters in Pittsburgh, **we operate and innovate in more than 70 countries.**



**We serve customers in construction, consumer products, industrial and transportation markets and aftermarkets.**

[www.ppgpaints.com](http://www.ppgpaints.com)





# Cornerstone Partners



**Committed to our Industry and Community:** The Home Depot Foundation has committed \$50 million to train 20,000 tradespeople by 2028. We are creating a formal program to place these graduates into careers with you, our Pro customers, to address your labor gaps and build your business.



**Committed to Operating Sustainably:** The Home Depot tracks our carbon dioxide emissions from distribution, store energy use, and more using industry standard metrics.

- Reducing CO2 emissions 2.1% per year to achieve 40% reduction by 2030 and 50% reduction by 2035
- Procure or produce 335 megawatts of renewable energy by 2025. Currently have 47 stores with rooftop solar and 45 more stores underway.
- By optimizing how we load products into trailers, we maximized loads, avoiding emissions from about 10,500 trucks traveling 15 million miles.



**Coast-to-Coast Coverage – National Scale, Local Focus:** Get the products you need to get the job done quickly.

- Enjoy free, next-day delivery
- 75+ distribution centers keep us close to our customers
- 2,200+ store locations mean we're part of your community

[www.boma.org/BOMA/About-BOMA/MemberSavingsPrograms.aspx](http://www.boma.org/BOMA/About-BOMA/MemberSavingsPrograms.aspx)



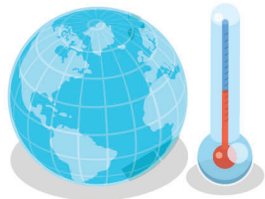


# Cornerstone Partners



**Buildings are responsible for 49% of the world's energy consumption** and according to the U.S. Environmental Protection Agency, on average, **30% of the energy used in commercial buildings is wasted.** (Source: [About the Commercial Buildings Integration Program | Department of Energy](#))

[click here](#)



Using leadership in building technology and energy solutions to **get it right for the customer and the climate.**

[click here](#)



Trane helps customers succeed by **providing sustainable, resilient solutions that optimize indoor environments.**

[click here](#)



Trane is a world leader in sustainable building HVAC systems, connected solutions and services.

[click here](#)



Trane helps customers navigate regulatory standards, financing and incentives to **decarbonize, electrify and improve overall efficiency.**

[click here](#)

[www.trane.com/commercial/north-america/us/en.html](http://www.trane.com/commercial/north-america/us/en.html)






## Cornerstone Partners




Did you know that building maintenance costs have increased 15% over the past 5 years?


Offset rising costs by addressing each stage of building and equipment maintenance with Yardi® Facility Manager:



**Reactive:** Save time spent on tenant-initiated tasks and prolong equipment health.



**Proactive:** Get ahead of reactive maintenance by scheduling regular inspections and equipment upgrades.



**Preventive:** Leverage the Facility Manager and Pulse® Fault Detection integration – a first in the industry – to identify potential issues before they happen.

Shift to proactive and preventive maintenance with the latest in automation and smart technology.

[yardi.com/facilitymanager](http://yardi.com/facilitymanager)

